

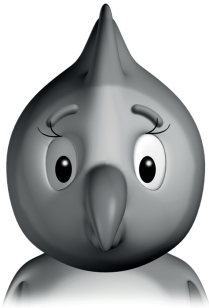
## 2

## Letter to parents Level 2

Dear parents/carers,

Welcome to *Super Safari*. This course for pre-school children introduces English in a fun and age-appropriate way. At Level 2 your child will become familiar with hearing and using English in the classroom through chants, songs, games, and listening and speaking activities.

There are four animal characters in *Super Safari*; they will become familiar friends who guide the children and also feature in the stories in the course. Each story helps children to think about a value, such as sharing, listening to people or saying 'thank you'.



**Polly**



**Leo**



**Gina**



**Mike**

Every unit of Level 2 has a page dedicated to 'Total Physical Response' – listening to English instructions and responding physically. This approach, together with the many opportunities to mime, dance, sing, play and make things in *Super Safari*, channels your child's boundless energy into acquiring language as naturally as possible.

The course also helps develop your child's thinking skills – at Level 2 he/she will use skills such as testing predictions, sorting, focusing on detail and sequencing. In Level 2 children practise counting in English and name more key things in the world around them. They also respond to and ask questions about names, possessions, homes, families and the world.

By the end of Level 2 children can count from one to six, name six colours, talk about what they can do, their likes and dislikes, locations of objects and the weather.

Level 2 covers the following vocabulary and language:

- Classroom objects *This is my (crayon).*
- Parts of the body *I can (clap my hands).*
- Furniture and toys *Where's my (book)?  
It's in/on/under the (bookcase).*
- Animals *Is it a (rabbit)? Yes, it is./No, it isn't.*
- Fruit and vegetables *Do you like (vegetables)?  
Yes, I do./No, I don't.*
- Places in town *Let's go to the (park).*
- Jobs *My (mum)'s a (doctor).*
- The weather *Is it (hot/cold/sunny/snowy)?  
Yes, it is./No, it isn't.*
- The countryside *The (bee) is/isn't (big). It's (small).*

At this stage in your child's English learning experience, you can help by:

- giving him/her lots of praise and encouragement whenever he/she uses English
- helping him/her to learn the names of the characters in *Super Safari*
- pointing out English around you at home and when you are out and about (words borrowed from English in your own language, signs, words from songs, names of international toys)
- saying the chants and singing the songs from the course with your child (these are available to download on this website)
- practising at home the language your child uses in class (e.g. *Hello, Goodbye, Sorry, Stand up, Sit down, Pick up your ... , Where's your ...? Look in the (toy box). What's this? Look! It's a (bee). What's the weather like today?*)
- practising the key words from the course at home (e.g. asking about where things are in the child's own bedroom, using fruit and vegetables at home to practise *Do you like (carrots)?*, getting the child to point to and name parts of the body in English (*arms, head, legs, feet, hands, body*))
- looking at the displays and craft activities in your child's English classroom, and talking about the work your child has done.

We hope your child has lots of fun using *Super Safari* and makes excellent progress at the beginning of his/her journey learning English.